

CITY OF KELOWNA

BYLAW NO. 10396

Official Community Plan Amendment No. OCP10-0010 – Kirschner Mountain Estates Ltd, Donald and Amy Kirschner 2061 Garner Road and 2045 Loseth Road

A bylaw to amend the "*Kelowna 2020* – Official Community Plan Bylaw No. 7600".

The Municipal Council of the City of Kelowna, in open meeting assembled, enacts as follows:

1. THAT Map 19.1 - **GENERALIZED FUTURE LAND USE** of Schedule "A" of "*Kelowna 2020* – Official Community Plan Bylaw No. 7600" be amended by changing the Generalized Future Land Use designation of a portion of Lot 2, Section 13, Township 26, ODYD, Plan KAP86315, located on Garner Road, Kelowna, B.C., from the "Major Park/Open Space" designation to the "Single/Two Unit Residential" designation and a portion of Lot 3, Section 13, Township 26, ODYD, Plan KAP86315, located on Loseth Road, Kelowna, B.C., from the "Single/Two Unit Residential" designation to the "Major Park/Open Space" designation as per Map "A" attached to and forming part of this bylaw;
2. AND THAT pursuant to Section 882 of the *Local Government Act*, each reading of this bylaw receive an affirmative vote of a majority of all members of the Council;
3. This bylaw shall come into full force and effect and is binding on all persons as and from the date of adoption.

Read a first time by the Municipal Council this 9th day of August 2010.

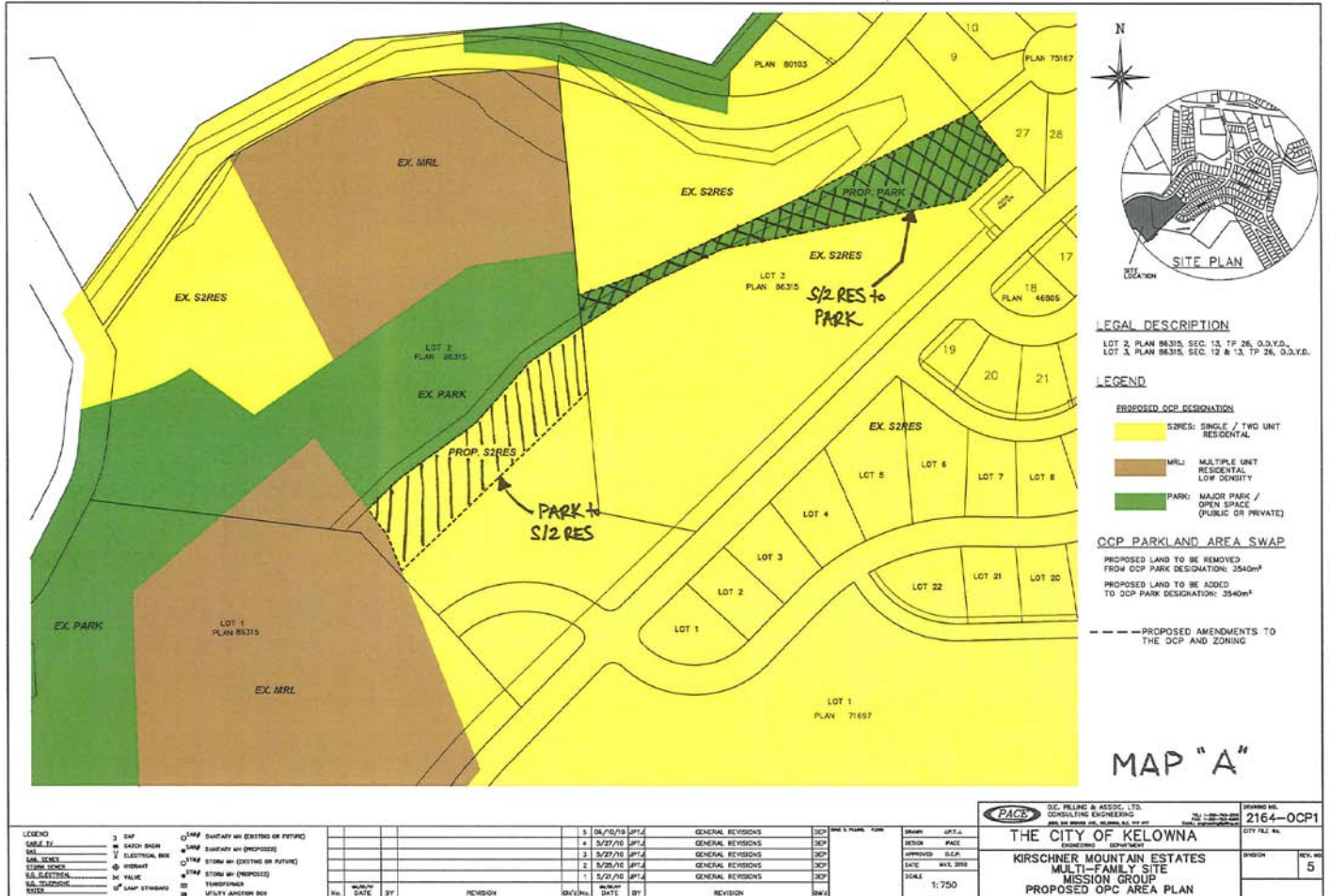
Considered at a Public Hearing on the

Read a second and third time by the Municipal Council this

Adopted by the Municipal Council of the City of Kelowna this

Mayor

City Clerk



SYMBOL	DESCRIPTION
3	SEWER
4	WATER MAIN
5	STORM SEWER
6	STORM SEWER (PROPOSED OR FUTURE)
7	STORM SEWER (PROPOSED)
8	STORM SEWER (PROPOSED)
9	STORM SEWER (PROPOSED)
10	STORM SEWER (PROPOSED)
11	STORM SEWER (PROPOSED)
12	STORM SEWER (PROPOSED)
13	STORM SEWER (PROPOSED)
14	STORM SEWER (PROPOSED)
15	STORM SEWER (PROPOSED)
16	STORM SEWER (PROPOSED)
17	STORM SEWER (PROPOSED)
18	STORM SEWER (PROPOSED)
19	STORM SEWER (PROPOSED)
20	STORM SEWER (PROPOSED)
21	STORM SEWER (PROPOSED)
22	STORM SEWER (PROPOSED)
23	STORM SEWER (PROPOSED)
24	STORM SEWER (PROPOSED)
25	STORM SEWER (PROPOSED)
26	STORM SEWER (PROPOSED)
27	STORM SEWER (PROPOSED)
28	STORM SEWER (PROPOSED)

NO.	DATE	BY	REVISION
1	5/21/20	JPL	GENERAL REVISIONS
2	5/21/20	JPL	GENERAL REVISIONS
3	5/21/20	JPL	GENERAL REVISIONS
4	5/21/20	JPL	GENERAL REVISIONS
5	08/10/19	JPL	GENERAL REVISIONS

NO.	DATE	BY	REVISION
1	5/21/20	JPL	GENERAL REVISIONS
2	5/21/20	JPL	GENERAL REVISIONS
3	5/21/20	JPL	GENERAL REVISIONS
4	5/21/20	JPL	GENERAL REVISIONS
5	08/10/19	JPL	GENERAL REVISIONS

NO.	DATE	BY	REVISION
1	5/21/20	JPL	GENERAL REVISIONS
2	5/21/20	JPL	GENERAL REVISIONS
3	5/21/20	JPL	GENERAL REVISIONS
4	5/21/20	JPL	GENERAL REVISIONS
5	08/10/19	JPL	GENERAL REVISIONS

D.E. FILLING & ASSOC. LTD. CONSULTING ENGINEERS 200 DE WATSON DR. WILLOWDALE, ONT.	DRAWING NO. 2164-OCPI
	CITY FILE NO.
THE CITY OF KELOWNA ENGINEERING DEPARTMENT	SHEET NO. 5
KIRSCHNER MOUNTAIN ESTATES MULTI-FAMILY SITE MISSION GROUP PROPOSED OPC AREA PLAN	SCALE 1:750